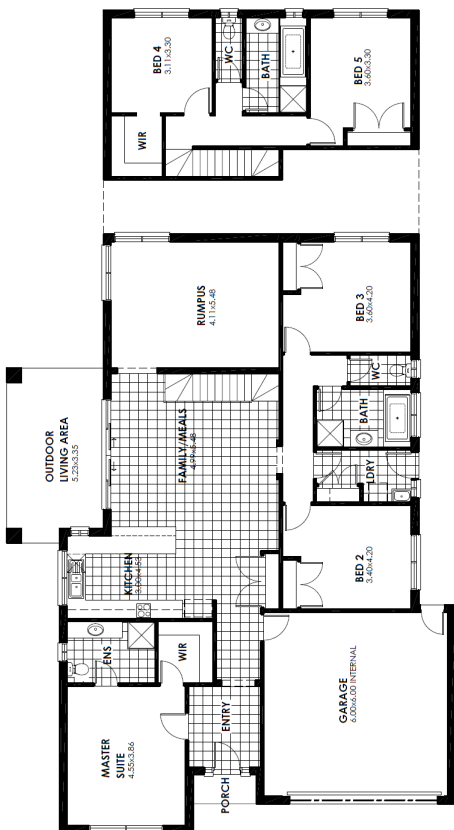


# The Bridport



**Lot 32 Timbertop Crescent, Drouin** - LAND SIZE 824m2  
**5 Bedrooms, Rumpus, Outdoor Living & Garage (30.85 squares)**

**House & Land  
 \$681,900**



**Inclusions:**

- ☑ Newdale Contemporary Façade
- ☑ Stumps & Timber Sheeting, & 300mm of site fall
- ☑ Colorbond Roof
- ☑ Colorbond Fascia & Gutter
- ☑ Gas Ducted Heating
- ☑ 2700mm Ceilings
- ☑ Flick Mixer Taps to Kitchen, Bath, Showers, Laundry & Vanity Basins
- ☑ 900mm Stainless Steel Electric Fan Forced Oven
- ☑ 900mm Stainless Steel Gas Hot Plates
- ☑ 900mm Stainless Steel Rangehood
- ☑ Dishwasher Provision
- ☑ Standard Range Stone Benchtop to Kitchen
- ☑ Aluminium Lockable Windows
- ☑ Double Glazing to All Windows
- ☑ Flyscreens to all opening windows
- ☑ Floor & Wall Tiles to Wet Areas
- ☑ Carpets
- ☑ 1200mm x 900mm Tiled Shower Base to Ensuite
- ☑ Double Vanity to Ensuite
- ☑ Panel Lift Remote Controlled Garage Door
- ☑ Solar Hot Water Service with Gas Instantaneous Booster
- ☑ NBN Package

Please call Peter Konjevic 0418 515 755

**red bluff** homes  
 SMART BY DESIGN

